

# CDRA - RS485 Control Software Instruction Sheet

## Required equipment.

PC running Windows™ 9x, NT, 2000, Me or XP operating system.

Serial port.

Rs232 to RS458 converter (e.g. BAX-COM).

## Hardware Setup

Connect the RS232 to RS485 converter to the serial port on the PC. Wire the RS485 to the camera as shown in the installation manual.

## Software Installation

The software does not require an installation procedure. Just copy the file **RS485 Control.exe** onto the PC in a suitable location (e.g. the Desktop).

## Running the software

Run the software by double clicking on the RS485 Control icon.

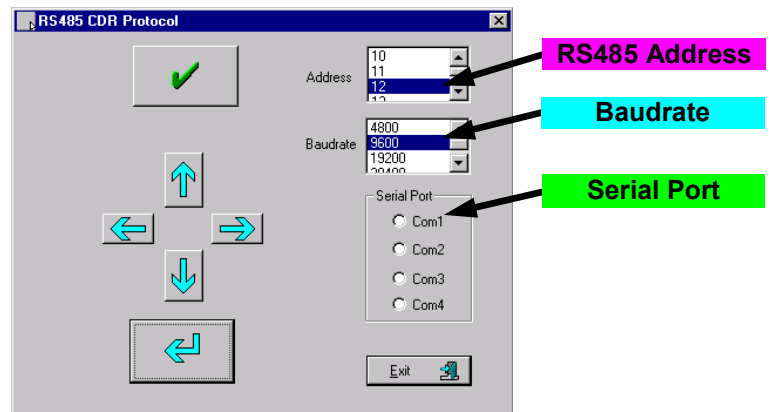


## Configuring the software

Select the number of the serial port used by the RS232 to RS485 converter.

Select a baudrate to match that selected for the camera.

Select the RS485 address of the camera that you wish to communicate with.



## Accessing the menus

The menu system is entered by clicking the ✓ button.



The menus are navigated using the four arrow keys.

